

## Bar Peeling Inserts

Bar peeling inserts are mainly designed for peeling and finishing of steel bars and tubes. Square shaped peeling inserts with four cutting edges can be used for finishing process; triangle shaped peeling inserts are mainly applied in products with limited requirements on surface roughness, also it is more extensively used together with the square shaped peeling inserts in rough processing; round inserts are commonly used along with the square and triangle inserts in rough processing.

We provide suitable grade and coating according to hardness of steel

### High Hardness Steel HL7650 and HL7659

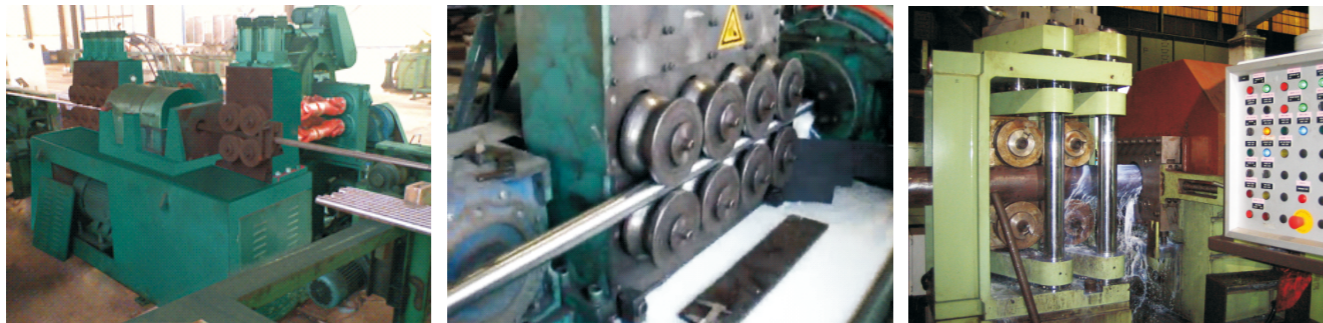
The hardness range of machined material is 260-340HB,HL76,combined with thick CD coating (batch No.50 or 59) shows super wear resistance, tenacity, red hardness and Impact resistance.

### Medium Hardness Steel HL7550 and HL7559

The hardness range of machined material is 185-270HB,HL7550 and HL7559 with CVD coating demonstrates high tenacity and better impact resistance.It is suitable for heavy duty machining and interrupted cutting.

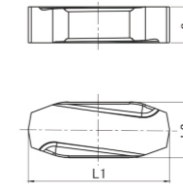
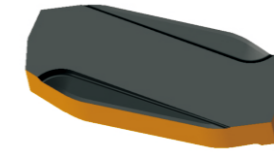
### General Hardness Steel HL7850 and HL7859

The hardness range of machined material is 140-210HB,HL7850 and HL7859 with CVD coating can impressively improve wear resistance, tenacity and demonstrate better impact resistance.

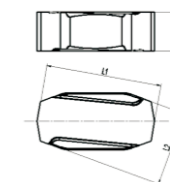
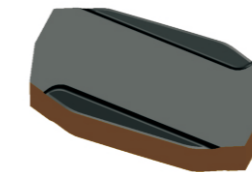


## Bar Peeling Insert

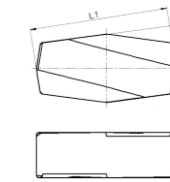
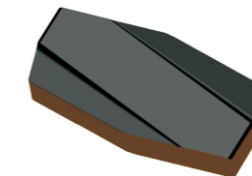
● Recommended Grade ○ Optional Grade



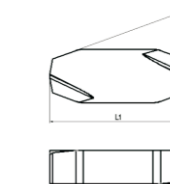
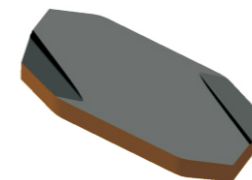
Order No.	Dimension ( mm )			Grade	
	L1	L2	s	HL7650	HL7659
YNMF2007	30.6	12	7.8	●	○



Order No.	Dimension ( mm )			Grade	
	L1	L2	s	HL7550	HL7559
YNMF3613	36.5	23.6	12.3	●	○



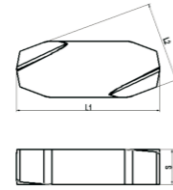
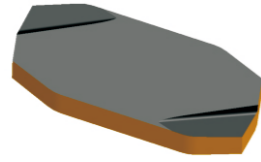
Order No.	Dimension ( mm )			Grade	
	L1	L2	s	HL7550	HL7559
YNUX181215SL-S	36.7	18	12	●	○



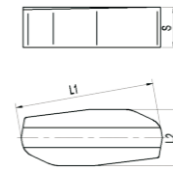
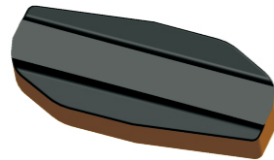
Order No.	Dimension ( mm )			Grade	
	L1	L2	s	HL7550	HL7559
YNMX1207L	30.7	17.2	7.5	●	○

► **Bar Peeling Insert**

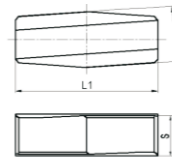
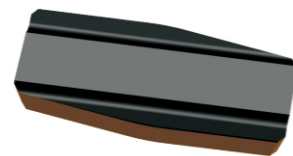
● Recommended Grade ○ Optional Grade



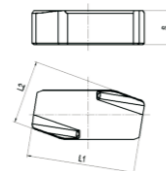
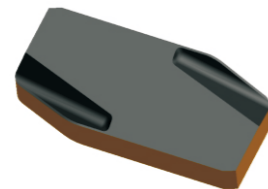
Order No.	Dimension ( mm )			Grade	
	L1	L2	s	HL7550	HL7559
YNMX1207R	30.7	17.2	7.5	●	○



Order No.	Dimension ( mm )			Grade	
	L1	L2	s	HL7550	HL7559
YNMX2518173L	62	25	18	●	○



Order No.	Dimension ( mm )			Grade	
	L1	L2	s	HL7550	HL7559
YNMX2006L	20.5	8	5.75	●	○



Order No.	Dimension ( mm )			Grade	
	L1	L2	s	HL7550	HL7559
YNMX381227	38.2	22.3	12	●	○

Series of horizontal dashed lines for notes or additional information.